



DATASHEET

# PLANET **LED PUCK** **SNAP** IP68 ST

LED Puck IP68 is the ideal waterproof handrail lighting solution. Built to last with premium materials and a vandal-resistant construction IP68 can deliver continued photometric excellence even in challenging environmental conditions: including snow and intermittent flooding — and all without sacrificing uniformity or elegance. It's confident lighting for the cold, wet or extreme.

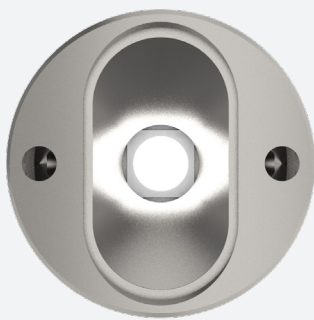


PLANET  
**LIGHTING**



# IP68 ST

IP68 is the ideal waterproof handrail lighting solution. Designed to deliver continued photometric excellence even in challenging conditions. IP68 is perfect for flood zones and extreme environments and available in a narrow, medium or wide beam.



## TYPICAL SPECIFICATIONS

Product Code	Specifications
SNAP-CF-ST-30-68	IP68 Standard Beam Curved Face 3000K
SNAP-CF-ST-40-68	IP68 Standard Beam Curved Face 4000K
SNAP-FF-ST-30-68	IP68 Standard Beam Flat Face 3000K
SNAP-FF-ST-40-68	IP68 Standard Beam Flat Face 4000K

## SPECIFICATIONS\*

### TECHNICAL

1.4W / 500mA / 2.8Vf  
3000K - 122lm / 4000K - 130lm  
CRI 80+ (CRI 90+ OPTION)  
3 STEP MACADAM ELLIPSE  
L90 B10 >100,000h

### OPTICS

OPTICALLY CLEAR POLYURETHANE

### DISTRIBUTION

ELLIPTICAL SYMMETRIC

### MATERIAL

316 STAINLESS STEEL  
ELECTROPOLISHED

### AMBIENT OPERATING CONDITIONS

min. -40° / max. 55°

### PROTECTION CLASS

IK10 / IP68 — RATED TO 2m at 24hrs  
(NOT FOR PERMANENT SUBMERSION)

### ELECTRICAL

COOLSPICE CONNECTOR

### INSTALLATION SURFACE

MIN. 1.5mm WALL THICKNESS  
MIN. Ø35mm RAIL (CURVED FACE ONLY)



### HOLE SIZE

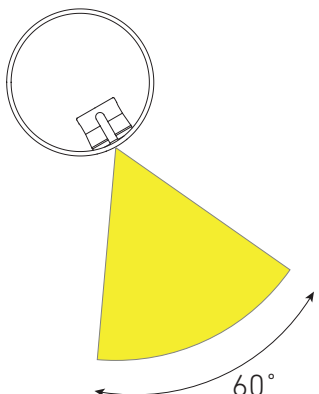
Ø15mm

### COUNTERBORE

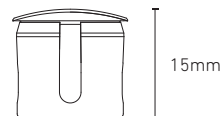
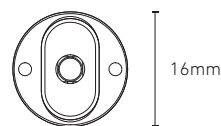
(REQUIRED FOR FLUSH FINISH)  
Ø16mm x 1.6mm (Curved Face)  
Ø16mm x 0.5mm (Flat Face)

### CONTROL

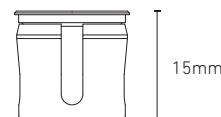
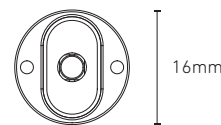
1-10V | DALI | DMX | ZIGBEE | CASAMBI  
BLUE LIGHT LINK | basicDIM WIRELESS



*Elliptical symmetric distribution for typical mounting at 30° from vertical*



Curved Face



Flat Face

## Ask Us.

Your success is important to us. Get in touch with your Planet LED Puck supplier today.

\*Specifications are subject to change without notice.  
†Test for LED emitter at 500 mA and below 55°C ambient temp.

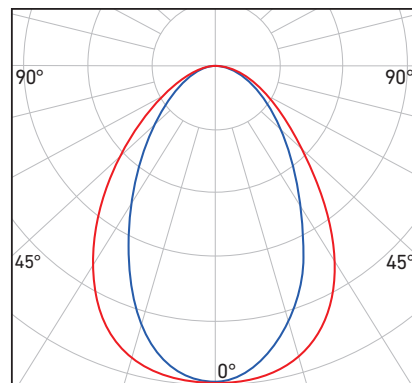




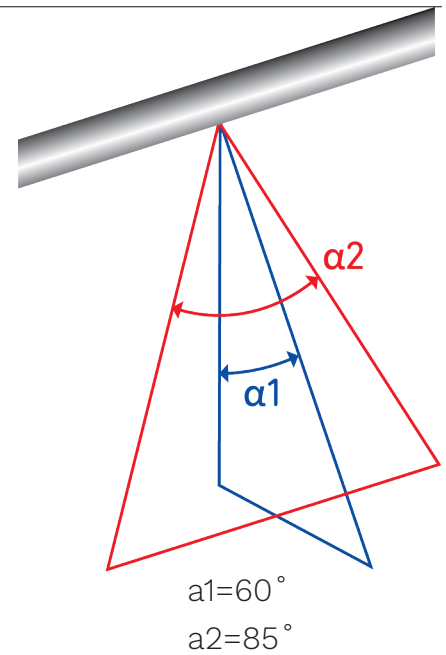
## PHOTOMETRICS

IP68 ST has an elliptical symmetric distribution. Designed for insertion at 0-10 degrees from the vertical axis of the handrail underside. The symmetric beam illuminates the path but keeps the light source out of sight. IP68 is available in a range of standard distributions and special angles on request.

## STANDARD BEAM 3000K



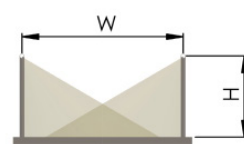
## BEAM ALPHA 3000K



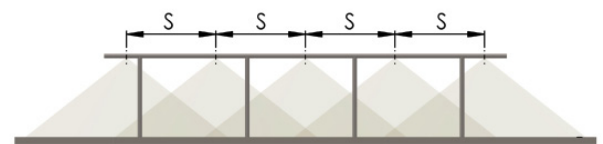
## LUX GUIDE

The following guide is intended to help designers and engineers with desired lux levels. The drawing to the right shows a typical installation into a handrail. The tables list the average lux at a variety of path widths and LED spacings.

### TYPICAL INSTALLATION



Height (H) is at 1m



### STANDARD BEAM: LIGHT FROM BOTH SIDES

Path Width (W)	1.2m	2.0m	3.0m	4.0m
LED Spacing (S)	lx	lx	lx	lx
0.5m	192	115	77	57
1.0m	96	57	38	29
2.0m	48	29	19	14

lx = average lux

CCT = 3000K

Note: Calculations indicated are with LED module installed at 30° offset from vertical down axis.

