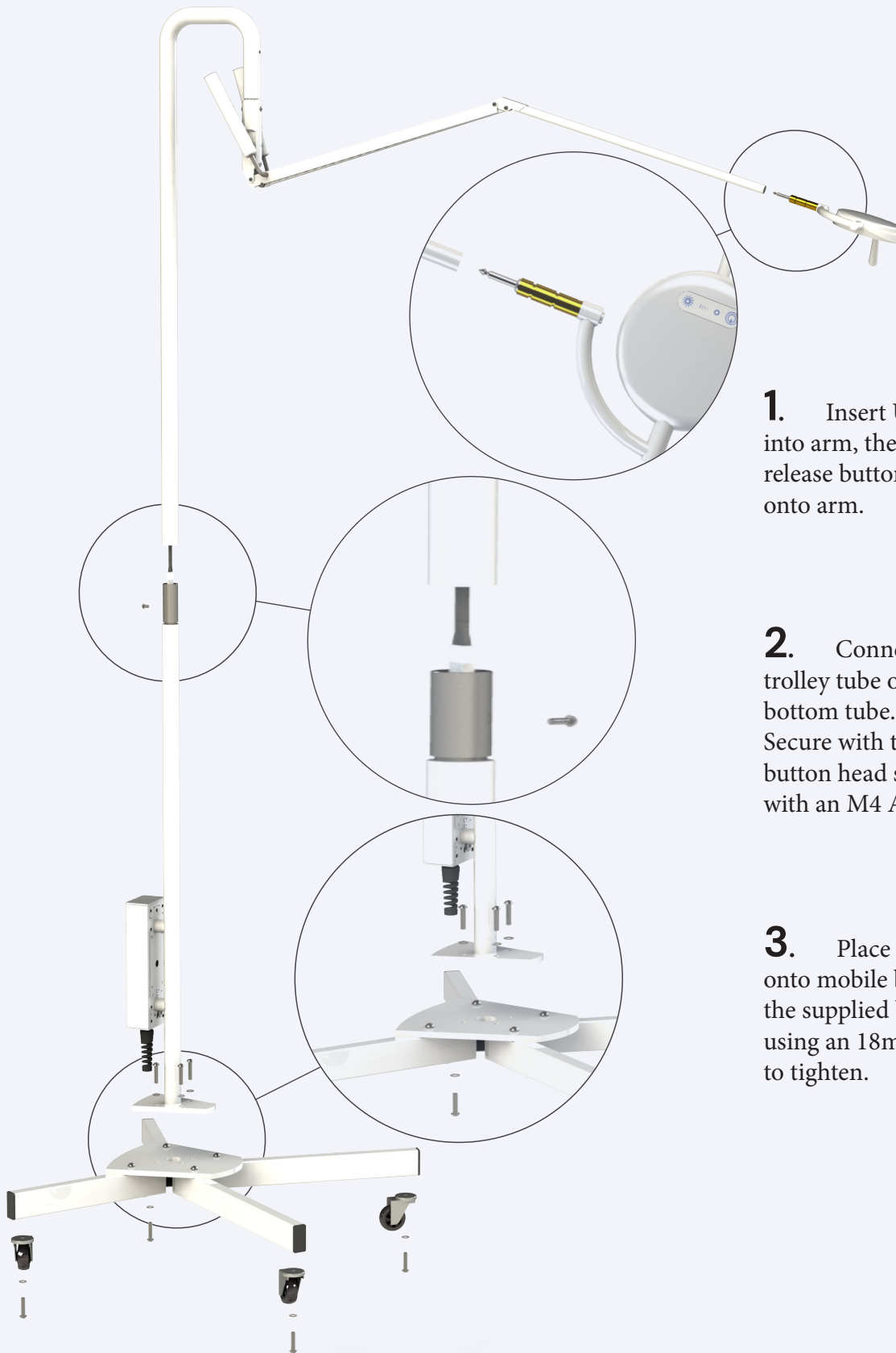


# Trolley Mount Assembly Instructions



  
Hex key supplied

**1.** Insert ULED head jack into arm, then depress lock/quick release button to secure head onto arm.

**2.** Connect plug, then slide trolley tube onto the spigot in the bottom tube. Secure with the supplied M6x10 button head socket and tighten with an M4 Allen key.

**3.** Place bottom trolley tube onto mobile base. Secure with the supplied bolt and washer, using an 18mm spanner/socket to tighten.