



UNO PANEL

DATASHEET

Uno Panel is the ideal toolless mounting solution for the Uno: Planet Lighting's all-in-one housing, controller and power supply. Designed for Uno, Uno Panel provides quick and easy installation, replacement or removal of your Uno units and is available in a range of clamps and bracket kits to secure to any sea cage design.

REMOTE GEAR

Uno Panel is part of Planet Lighting's unique Focus sea cage lighting system. Gear is mounted at the cage rail to minimise equipment inside the cage, and to allow optimal protection and serviceability.

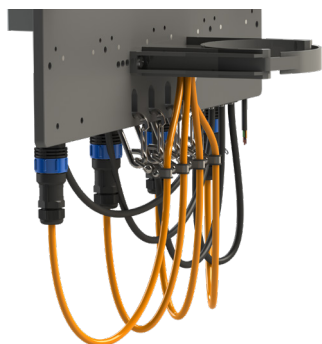
OPTIONS

- AC Plug Board options are available to suit various electrical connections (see below).
- A range of sea cage bracket kit solutions are available (see page 2).

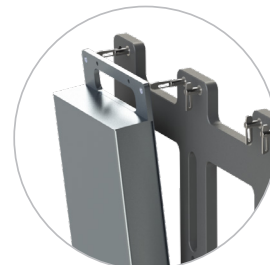
APPLICATIONS

Sea Cage Aquaculture

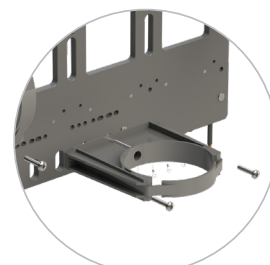
Uno Panel is designed exclusively for easy install, replacement and removal of Planet Lighting Uno housings



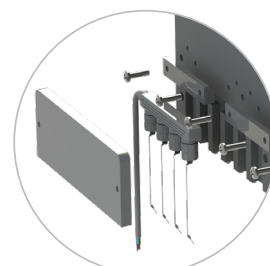
Strain relief carabiners on the Focus 600 sea cage light snap into place on the Uno Panel. Marine and AC cable runs are designed with drip loops to keep water away from connections.



Easy, toolless design



Clamps and bracket kits to suit any cage design



AC Plug Board options (see below)

PRODUCT CODE	STANDARD SPECIFICATION
UP1-1x4	Uno Panel with 1x4 plug board holds up to 4 Uno housings on one circuit
UP1-2x2	Uno Panel with 2x2 plug boards holds up to 4 Uno housings on two circuits

AC Plug Board Options are also available separately

AC PLUG BOARD	DESCRIPTION	
UP-PB-4	1x4 socket AC Plug Board	
UP-PB-2	1x2 socket AC Plug Board	

SPECIFICATIONS

UNO PANEL

DATASHEET

MOUNTING

- Mounts up to 4 Uno housings

MATERIALS

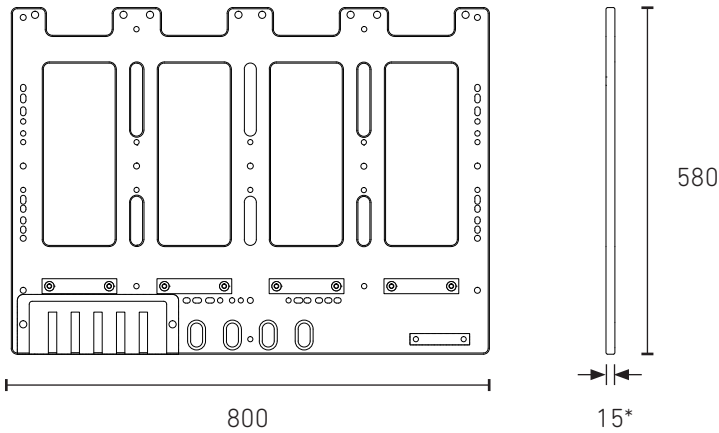
- HDPE
- Stainless Steel 316

OPTIONS

- AC Plug Board options
- Various clamp and bracket kit options available to fix Uno Panel to your cage.

DIMENSIONS & WEIGHT

- 580 mm (H) x 800 mm (W) x 15 mm (D)
- Weight: 5.3 kg



Uno Panel Dimensions.
All measurements in millimetres (mm)

INSTALLATION

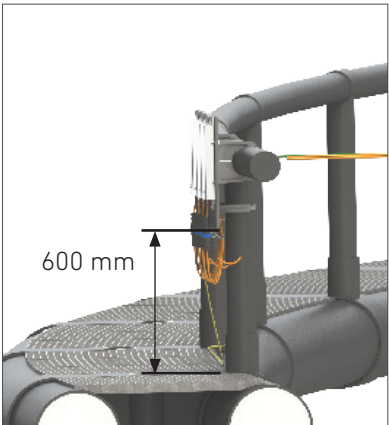
QUICK ASSEMBLY & INSTALLATION

Uno Panel is designed for quick assembly and easy, no fuss installation with a wide range of sea cage clamp and bracket solutions available.

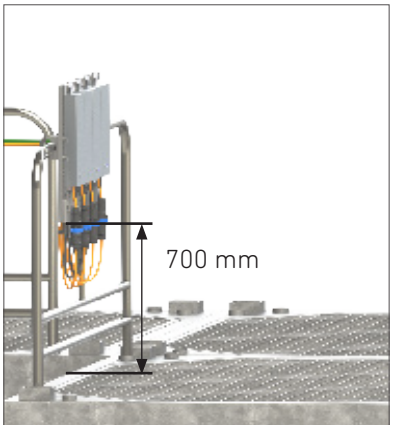


CLEAR THE PATH

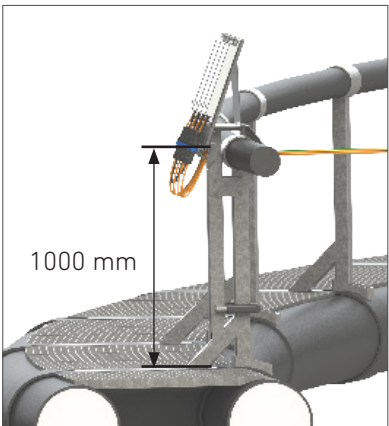
At a depth of only 70 mm, Uno Panel pairs with the Uno's slimline-design housing to save critical space on tight sea cage walkways



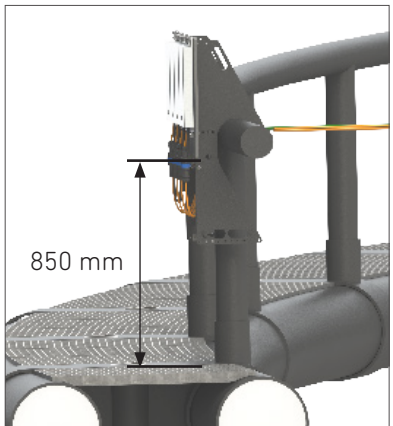
HDPE Pens, Handrail Clamp



Metal Pens, Rail Clamp



Aqualine, Universal Bracket Mount



Legacy Upgrade

Mounting height above walkway for available Uno Panel clamp and bracket solutions.**



PLANET
LIGHTING

*Unassembled.

**Assumes top of handrail to waterline measures 1200 mm.
Install height may vary depending on cage design.