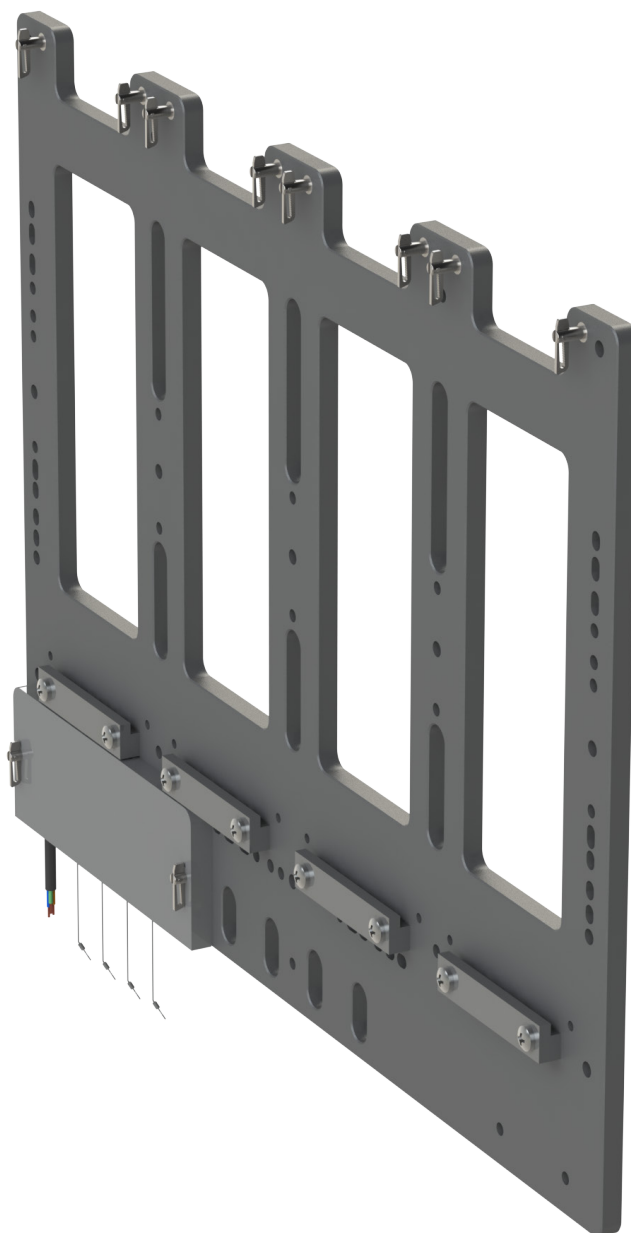




PLANET
LIGHTING

UNO PANEL ASSEMBLY

MANUAL



PLANET
LIGHTING

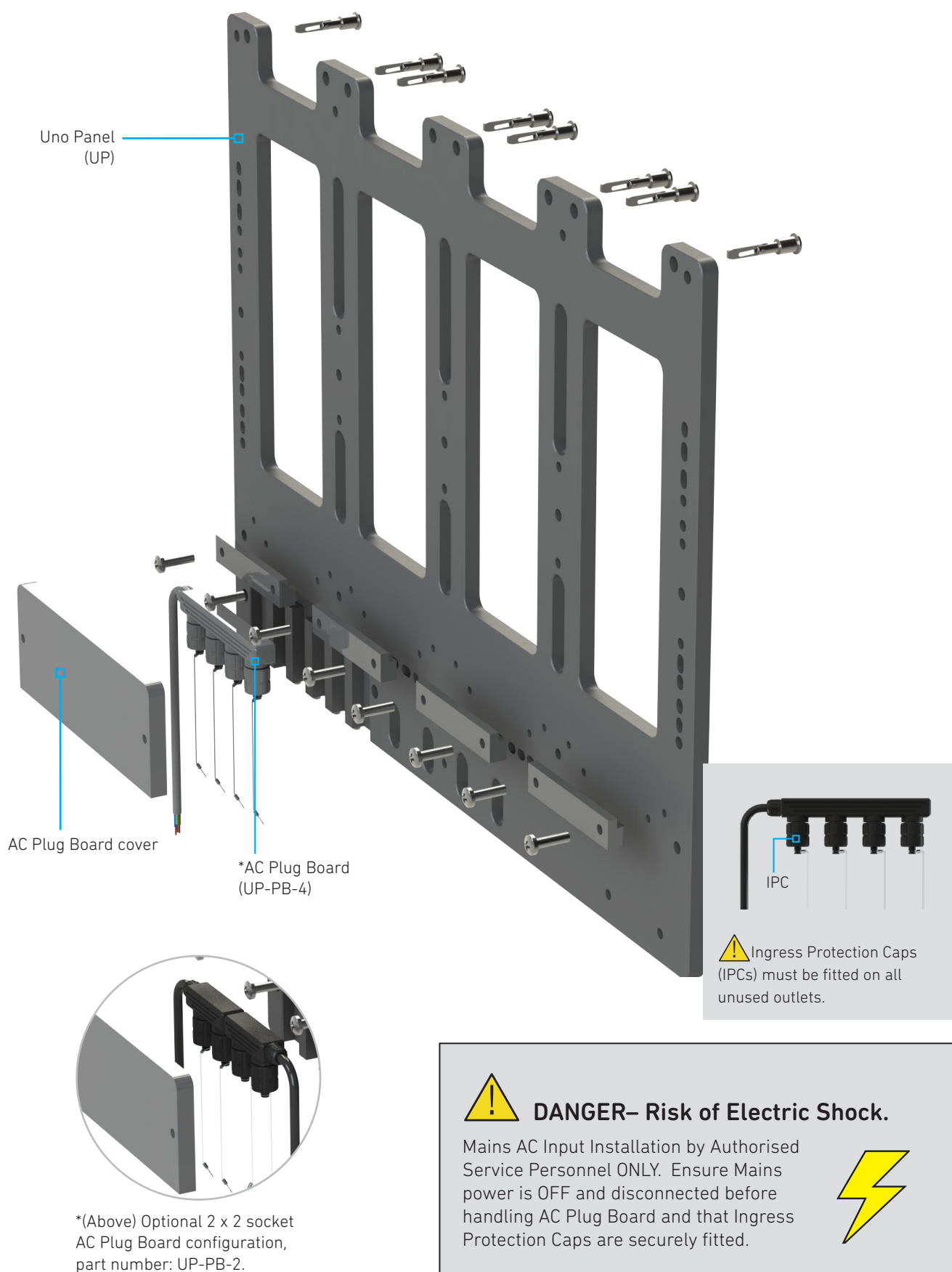
[View this manual live
on our website.](#)



Please note the information
in this document is subject
to change without notice.

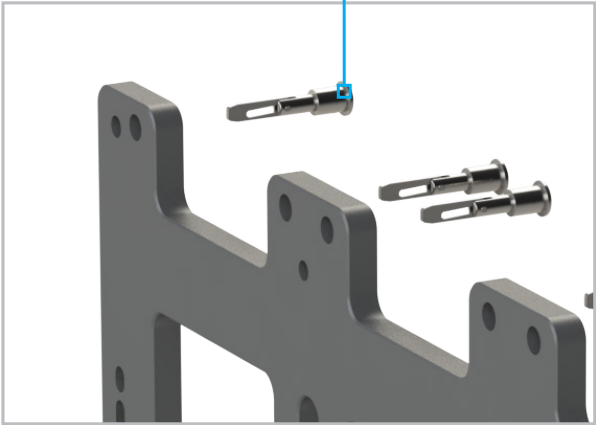
Uno Panel Assembly
ver.16082021-00 Page 1 of 4

OVERVIEW



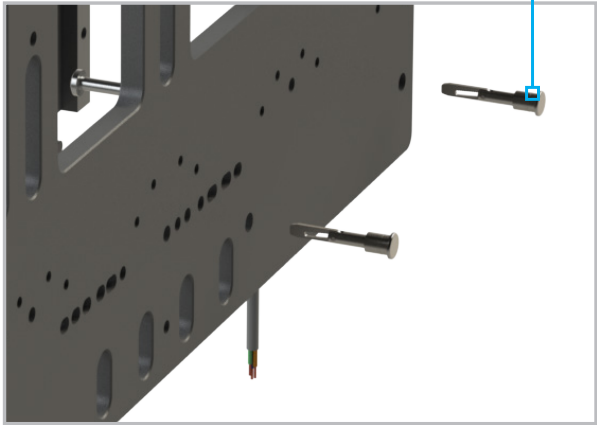
INSTRUCTIONS

Short drop nose pin
(UP-DNP-HI35)

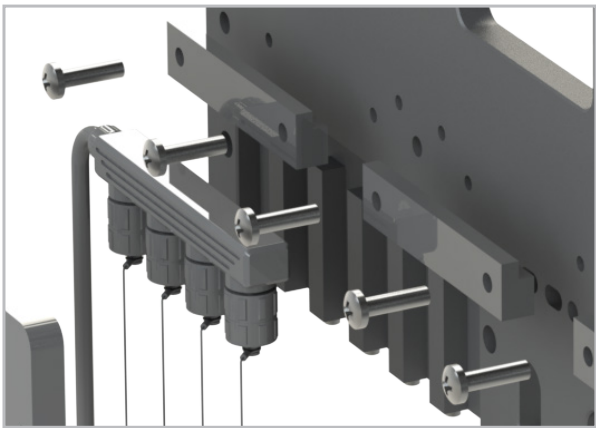


1. Insert 2 x shorter 35mm drop nose pins per Uno mounting block

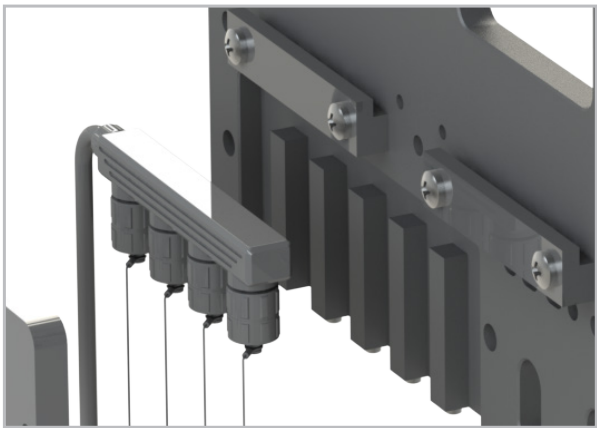
Long drop nose pin
(UP-DNP-LO40)



2. Insert 2 x longer 40mm drop nose pins for AC Plug Board cover



3. Secure the bottom bracket with 2 x screws per Uno mounting block.



4. Insert AC Plug Board(s). Secure the Plug Board Cover with the drop nose pins.

NOTE! Ensure drop nose pins are inserted in the correct orientation to enable correct locking function. When inserting the drop nose pin for assembly, the pin teeth should be located at the top of the opening – see position 1: Open (right).



1. Open: Ready to install or remove an Uno.



2. Closed with Uno in place but not locked.



3. Closed and Locked: Uno held and locked in place.

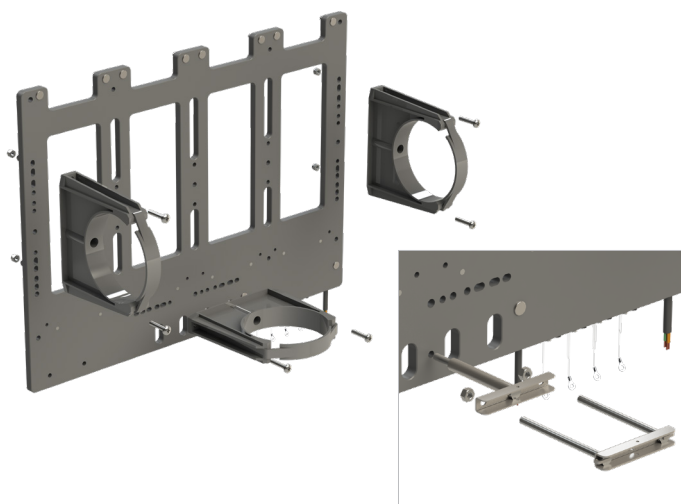


THIS WAY
UP



BRACKET ASSEMBLY

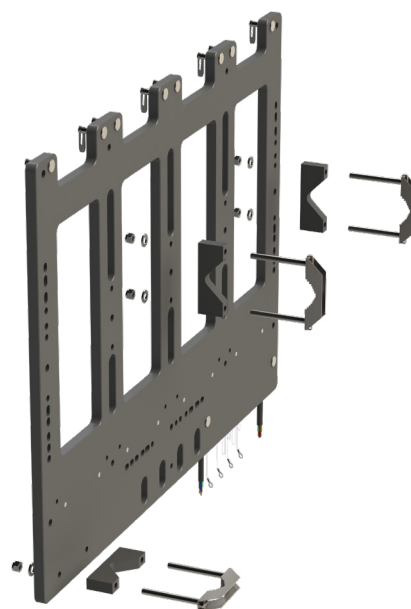
Uno Panel can be secured via a range of bracket solutions.



Aqualine adapter

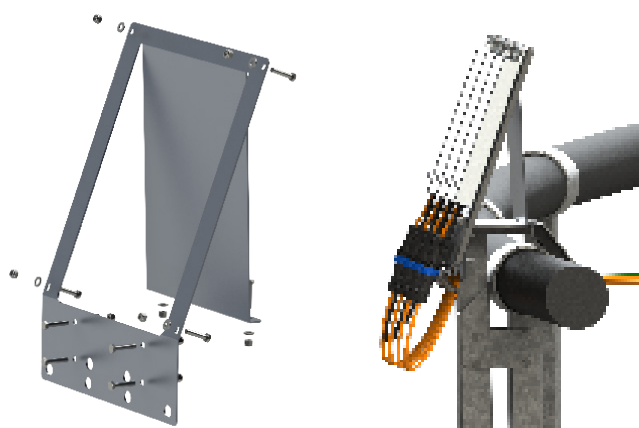
HDPE Pens, Handrail Clamp

Each pipe clamp requires a stainless steel screw and nyloc nut. Aqualine steel stanchion variation (above right) requires Planet Lighting bracket kit part number UP1-BK-AS



Metal Pens, Rail Clamp

Planet Lighting bracket kit part number: UP1-BK-M

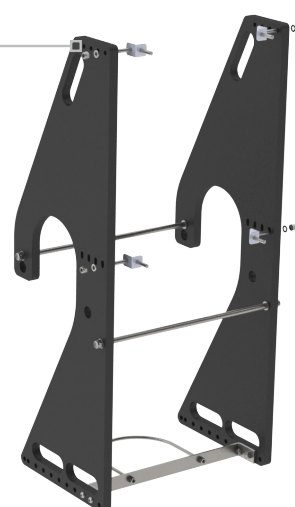


Aqualine, Universal Bracket Mount

Planet Lighting bracket kit part number: UP1-BK-AUB



Bracket Adapters



Legacy H-MBP Upgrade

Requires Planet Lighting bracket kit part number: UP1-BK-AP

