



Swedish Museum of Natural History,
Stockholm, Sweden



PLANET
LIGHTING

Product Guide

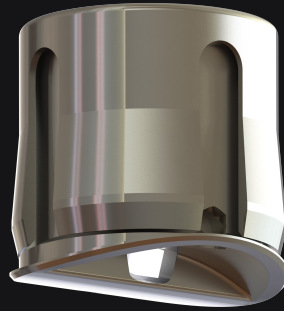


ARCHITECTURAL

planetlighting.com/led-puck

“Light where
you need it, and
none where you
don’t”

- Sinclair Park,
Senior Lighting Designer,
Designer of LED Puck



Palsjö forest, Helsingborg,
Swðden



Katoomba Reserve Night-lit walk, Katoomba
Australia

PLANET **LED PUCK**

We believe a lighting vision expressed beautifully can capture an entire generation.

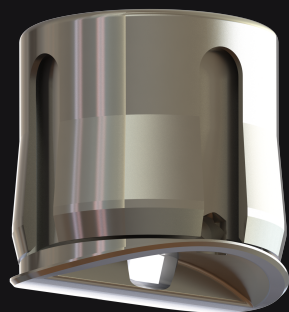
Small, discreet and endlessly versatile, Planet LED Puck is designed to bring your unique lighting vision to life – whether your project is a pedestrian bridge in Sweden or a jewelry store in Hong Kong.



planetlighting.com/led-puck



PLANET
LIGHTING



PLANET LED PUCK

Light the way or sculpt an experience with our Air Director series. Light, obscure, or reveal – you are in control.

Various beam types are available.

Park union Bridge, Colorado
Springs, USA



planetlighting.com/led-puck



PLANET
LIGHTING



AIR



AIR Snoot



AIR Wand



AIR Globe

LED PUCK Air

Catenary lighting re-imagined
from the ground up.

LED Puck Air is the lightest and smallest professional grade catenary luminaire ever made. At only 25mm in diameter and approximately 100 grams per luminaire, Air is only a fraction in size and weight of other catenary luminaires on the market – and in some cases up to 100 times lighter!

Streamlined simplicity is at the core of the LED Puck Air system – No extra clunky power wires and no typical catenary clutter. Also, Air's tension requirements for mounting are minimal, reducing project time and cost and removing engineering complexity. Air is a system as elegant as the light it produces.



planetlighting.com/led-puck



PLANET
LIGHTING

Engineer The Experience.

LED Puck Air is not just a light, but an all-in-one lighting suite designed to bring a personal and creative vision to life.

Air comes complete with a family of options and accessories for lighting designers and engineers – giving confidence and control to create a unique lighting experience.

Air is a testament not just to modern lighting technology – or what ‘products can do’ – but rather a focus on what designers and engineers are truly capable of when given choices in light.

Various beam types are available.

Skyline - Cafe Bar Restaurant



planetlighting.com/led-puck