



[DATASHEET](#)

PLANET **LED PUCK** SNAP ST

Snap ST is the leading series of integrated LED modules designed specifically for handrails. Engineered for exceptional efficiency, durability, and photometric performance, Snap ST is both compact and impact-resistant. It features a patented collapsible shell design that allows for a quick and easy snap-in installation, resulting in a secure and discreetly flush finish. This solution offers versatile and elegant handrail lighting — all in a snap.

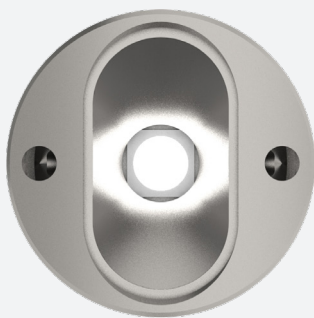


PLANET
LIGHTING



SNAP ST

5 years warranty is just the beginning. We design and manufacture entirely in our purpose built Australian facility. Snap ST is vandal resistant and impact rated to IK10, and each and every Snap ST puck is burned in to ensure the light you receive performs as it should.



TYPICAL SPECIFICATIONS

Product Code	Specifications
SNAP-ST-CF-30	SNAP Standard Beam Curved Face 3000K
SNAP-ST-CF-40	SNAP Standard Beam Curved Face 4000K
SNAP-ST-FF-30	SNAP Standard Beam Flat Face 3000K
SNAP-ST-FF-40	SNAP Standard Beam Flat Face 4000K

SPECIFICATIONS*

TECHNICAL

1.4W / 500mA / 2.8Vf
3000K - 170lm / 4000K - 180lm
CRI 80+ (CRI 90+ OPTION)
3 STEP MACADAM ELLIPSE
L90 B10 >100,000h

OPTICS

POLYCARBONATE (STANDARD)
BOROSILICATE (OPTION)

DISTRIBUTION

ELLIPTICAL SYMMETRIC

MATERIAL

316 STAINLESS STEEL
ELECTROPOLISHED

AMBIENT OPERATING CONDITIONS

min. -40° / max. 55°

PROTECTION CLASS

POLYCARBONATE IP65 / IK10
BOROSILICATE IP67 (OPTION)

ELECTRICAL

COOLSPICE CONNECTOR



INSTALLATION SURFACE

MIN. 1.5mm WALL THICKNESS
MIN. Ø35mm RAIL (CURVED FACE ONLY)



HOLE SIZE

Ø15mm

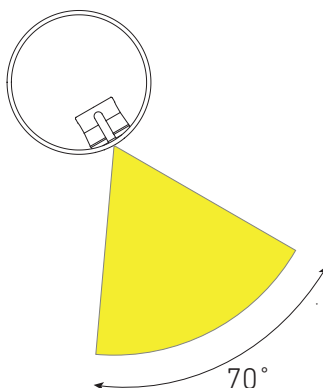


COUNTERBORE

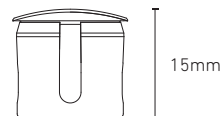
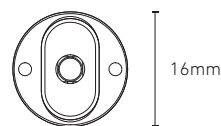
(REQUIRED FOR FLUSH FINISH)
Ø16mm x 1.6mm (Curved Face)
Ø16mm x 0.5mm (Flat Face)

CONTROL

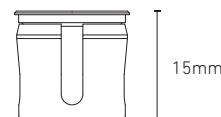
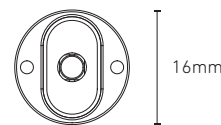
1-10V | DALI | DMX | ZIGBEE | CASAMBI
BLUE LIGHT LINK | basicDIM WIRELESS



Elliptical symmetric distribution for typical mounting at 30° from vertical



Curved Face



Flat Face

Ask Us.

Your success is important to us. Get in touch with your Planet LED Puck supplier today.

*Specifications are subject to change without notice.

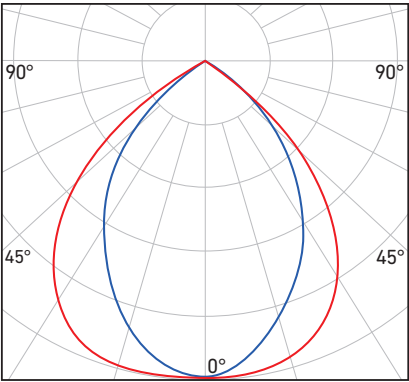
†Test for LED emitter at 500 mA and below 55°C ambient temp.



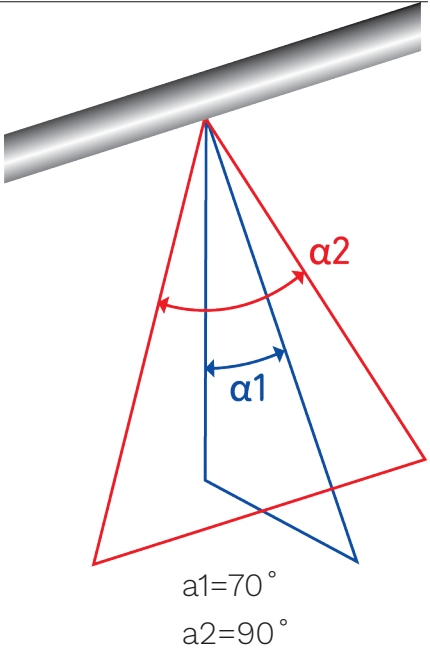
PHOTOMETRICS

Snap Standard has an elliptical symmetric distribution. For installation in handrail, mounting is typically at 30° from the vertical axis of the handrail underside. Snap ST is available in a range of distributions and special angles on request.

STANDARD BEAM 3000K



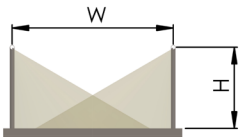
BEAM ALPHA 3000K



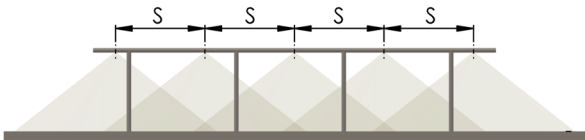
LUX GUIDE

The following guide is intended to help designers and engineers with desired lux levels. The drawing to the right shows a typical installation into a handrail. The tables list the average lux at a variety of path widths and LED spacings.

TYPICAL INSTALLATION



Height (H) is at 1m



lx = average lux
CCT = 3000K
Note: Calculations indicated are with LED module installed at 30° offset from vertical down axis.

STANDARD BEAM: LIGHT FROM BOTH SIDES

Path Width (W)	1.2m	2.0m	3.0m	4.0m
LED Spacing (S)	lx	lx	lx	lx
0.5m	342	205	137	103
1.0m	171	103	68	51
2.0m	86	51	34	26

