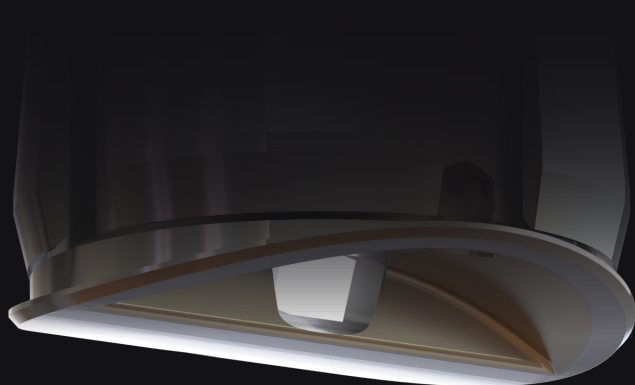




PLANET  
LIGHTING



[DATASHEET](#)

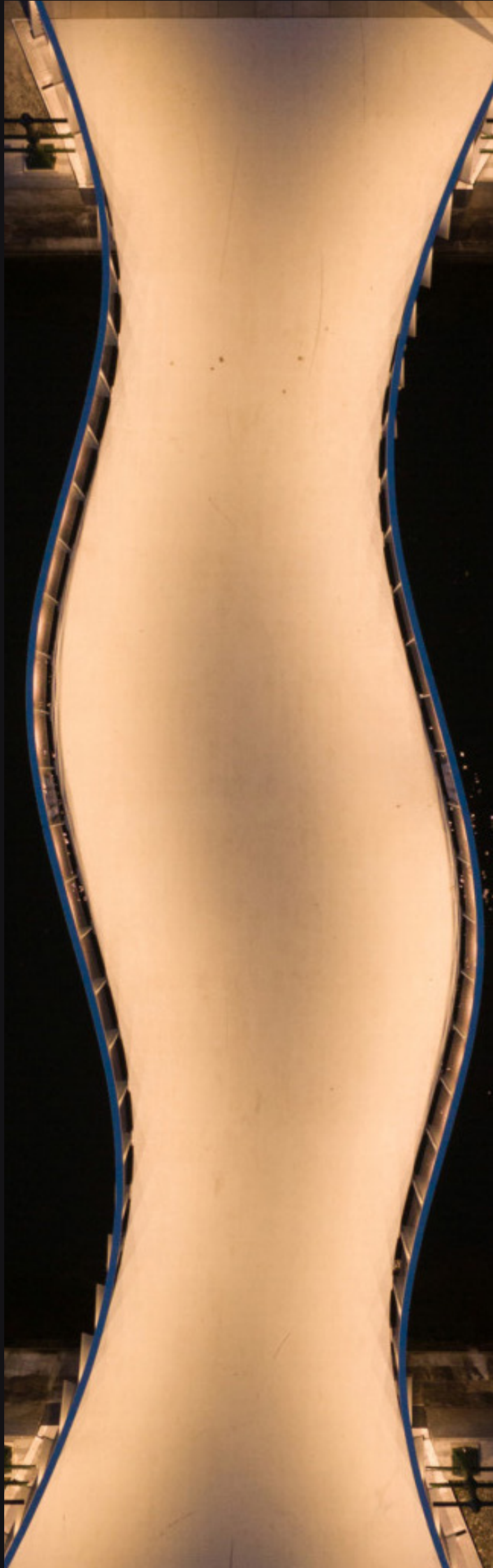
# PLANET LED PUCK SNAP UNI

## Superior Beam Control Meets Maximum Uniformity

The next revolution in integrated lighting and uniformity performance is here.

Snap Uni is a completely redesigned and optimised Snap luminaire for superior beam and glare control – now providing up to double the performance in uniformity.

It's everything we believe handrail lighting should be, and more.



# SNAP UNI

The next revolution in integrated lighting and uniformity performance is here.

Snap Uni combines the best of our Planet LED Puck Snap family with an all-new design for exceptional beam and glare control, now delivering up to twice the uniformity performance.

## SPECIFICATIONS\*



### Technical

1.4W / 500mA / 2.8Vf  
CRI 80+ (90+ optional)  
3 Step MacAdam Ellipse  
 $L_{90} B_{10} > 100,000 \text{ h}^{\dagger}$

### Performance

135lm (3000K)  
144lm (4000K)

### Colour

CCT options from 2200K to 7000K,  
and 17 colours

### Distribution

Elliptical asymmetric distribution

### Material

316 Stainless Steel, electropolished

### Ambient Operating Conditions

Min. -40°C / Max. 55°C

### Protection Class

IK10 | IP68 (2m for 2 weeks)

### Electrical

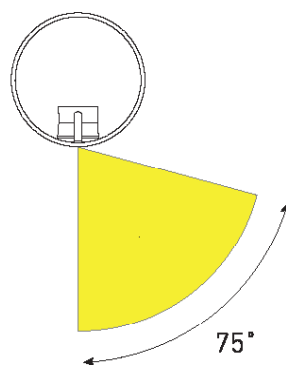
Coolsplce Connector

### Installation

- **Installation Surface:**
  - » Metal substrates only
  - » Min. 1.5 mm Wall Thickness
  - » Min. Ø35 mm Rail (Curved face only)
- **Hole Size:**
  - » Ø15 mm (Counterbore is required for a flush finish)
- **Counterbore:**
  - » Ø16 mm x 1.6 mm (Curved Face)
  - » Ø16 mm x 0.5 mm (Flat Face)

### Control

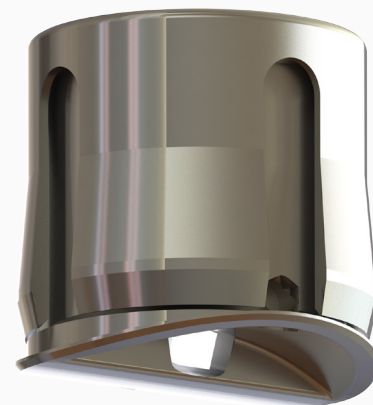
1-10 v | DALI | DMX | ZigBee | Casambi  
Blue Light Link | BasicDIM Wireless



*Snap Uni's elliptical asymmetric distribution has a forward throw and sharp cut off to help eliminate back spill.*

<sup>†</sup>Test for LED emitter at 500 mA and below 55°C ambient temp.

\*Specifications are subject to change without notice.

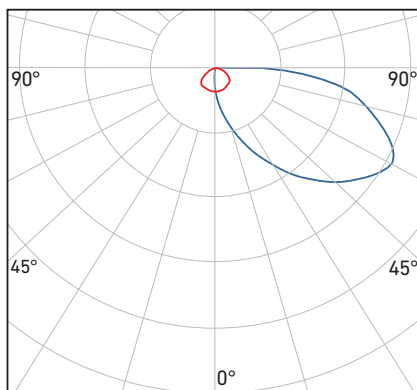


Engineer the experience  
with Snap Uni.

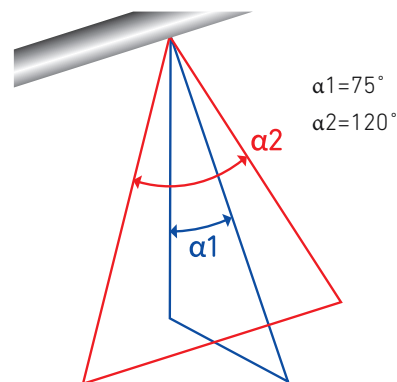


## PHOTOMETRICS

Snap Uni has a unique elliptical asymmetric distribution producing an extensive forward throw with high uniformity and no glare. Designed for insertion at 0 degrees from the vertical axis of a handrail's underside, Uni illuminates the path but keeps the light source out of sight.



Uni beam 4000 K






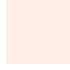





## LED OPTIONS

CCT from 2200K to 7000K

Also available in 17 colours:

Violet, royal blue, blue, PC blue, cyan, PC cyan, green, PC lime, PC mint, PC yellow, amber, PC amber, red-orange, PC red-orange, red, PC red, and photo red.

	2200K (22)		4000K (40)
	2700K (27)		5000K (50)
	3000K (30)		5700K (57)
	3500K (35)		6500K (65)
			7000K (70)

White <b>WT</b> Cool					White <b>WT</b> Neutral	White <b>WT</b> Warm	PhotoRed <b>HR</b> 650-670nm
Violet <b>VL</b> 400-420nm	Royal Blue <b>RY</b> 450-460nm	Blue <b>BL</b> 460-475nm	Cyan <b>CY</b> 490-510nm	Green <b>GR</b> 520-535nm	Amber <b>AM</b> 585-595nm	Red-Orange <b>RO</b> 610-620nm	Red <b>RD</b> 620-630nm
		Phosphor <b>PB</b> Blue	Phosphor <b>PC</b> Cyan	Phosphor <b>PL</b> Lime	Phosphor <b>PA</b> Amber	Phosphor <b>PO</b> Red-Orange	Phosphor <b>PR</b> Red
				Phosphor <b>PM</b> Mint	Phosphor <b>PY</b> Yellow		

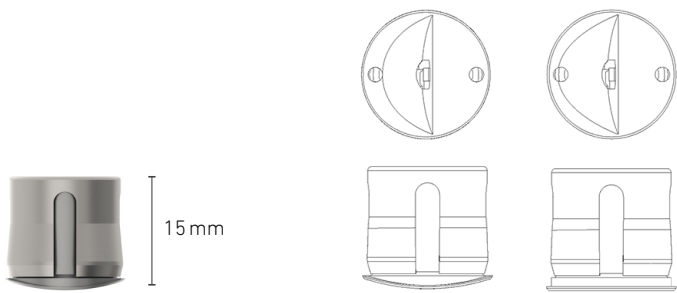
**Spec Your  
Planet LED Puck**  
The Way You Want It!



LUMINAIRE DETAIL

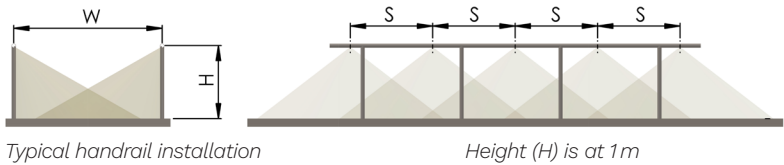
Featuring a push-to-snap-in design, Snap Uni's collapsible shell module enables a quick and secure installation. Available in curved or flat face. Custom curvature <35mm is also available.

Suitable for a range of rail types, square and curved as well as surface types.



Quick installation: Push to snap in

Available in curved or flat face



Path Width (W)	1.2 m	2.0 m	3.0 m	4.0 m
LED Spacing (S)	lx	lx	lx	lx
0.5m	291	174	116	87
1.0m	145	87	58	44
2.0m	73	44	29	22

Light from both sides

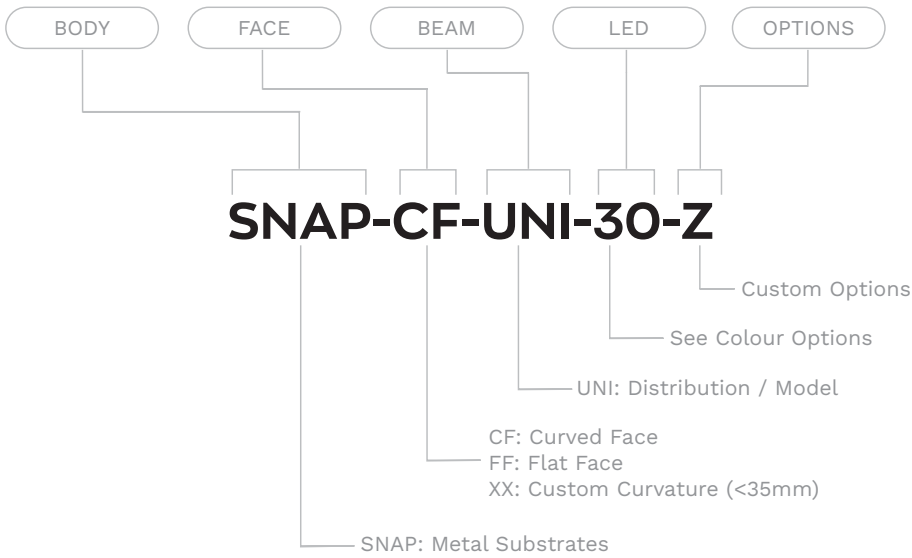
lx = average lux  
CCT = 4000 K  
Note: Calculations indicated are with LED module in vertical down position.





PRODUCT CODE BUILDER

See our Spec Your Planet LED Puck info sheets or website for more configuration options.



TYPICAL SPECIFICATIONS

Product Code	Specifications
SNAP-CF-UNI-30	Snap Body, Curved Face, Uni, 3000 K
SNAP-CF-UNI-40	Snap Body, Curved Face, Uni, 4000 K
SNAP-FF-UNI-30	Snap Body, Flat Face, Uni, 3000 K
SNAP-FF-UNI-40	Snap Body, Flat Face, Uni, 4000 K



Ask Us

Your success is important to us.  
Get in touch with your Planet LED Puck supplier today.

\*Specifications are subject to change without notice.