

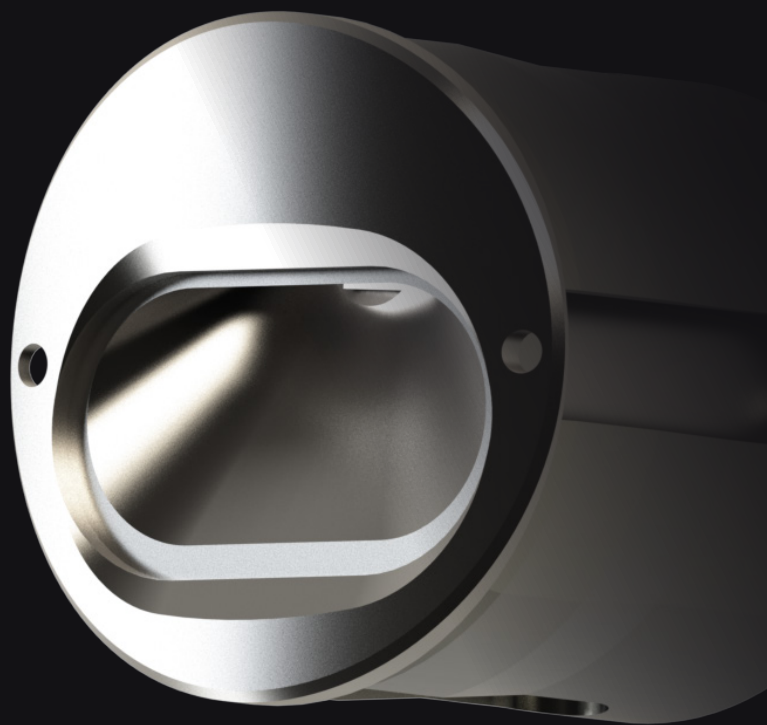


PLANET
LIGHTING

DATASHEET

PLANET
LED PUCK

MEGA PUCK APERTURE



Keep the path bright and our skies dark with MegaPuck Aperture: our extreme asymmetric technology combined with extreme glare and uplight control.

With a Unified Glare Rating (UGR) of <1%, MegaPuck Aperture is the ideal tool for keeping pathways well-lit while minimising light pollution. A versatile lighting solution for wall washing, paths and more, direct light precisely where you need it – with no spill or waste.

MegaPuck Aperture is adaptable to various installations, poles, bollards, or even flat surfaces, and seamlessly integrates into existing structures. Easy to install, discreet, and with zero uplight it's time to break free from lighting limitations.

MEGAPUCK APERTURE

MegaPuck Aperture is our extreme asymmetric MegaPuck luminaire with extreme glare and uplight control. Direct light where you need it – with no spill and waste.

MegaPuck Aperture is not only discreet and easy to install into existing structures, but performs with a UGR of <1%.

With zero uplight, MegaPuck Aperture is ready to keep pathways well-lit while minimising light pollution and is a versatile lighting solution for paths, wall washing and more.

SPECIFICATIONS*



ETLus conforms to UL2108
cETL conforms to CSA C22.2 #250.0

Technical

8W/700mA Max. (in metallic substrate)

6W/500mA Max. (in non-metallic substrate)

3 Step MacAdam Ellipse

L90 B10 >100,000h

CRI 80+ (CRI 90+ option)

Performance

Up to 500lm (in metallic substrate)

Up to 300lm (in non-metallic substrate)

Optics

Polycarbonate / PMMA

Distribution

Only available in asymmetric

Emitter Options

BINNING: 3-step bins, 2700 K–4000 K CCT

Tunable White, RGBW and 17 colour options

Material

Anodised aluminium

Finishes

Anodised black

Anodised bright

Powdercoat option (RAL colour)

Ambient Operating Conditions

Min. -40° / Max. 55°

Protection Class

IP67 / IK10

Electrical

- **Series:** Can be wired in series:
Up to 8 MegaPucks in series from a TCI MAXI JOLLY HV constant current LED driver set to 500mA; or,
Up to 6 MegaPucks in series from a TCI MAXI JOLLY HV constant current LED driver set to 700mA.
- **Parallel:** Can be wired in parallel using 24VDC (with 1 x inline DC-DC driver per MegaPuck).

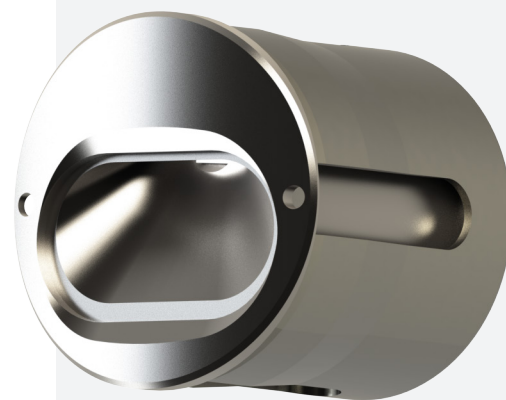
Installation

Can be integrated into flat or curved surfaces with a minimum thickness of 2mm. Flush or 1mm proud finish:

- **Flush Finish:**
 - » Flat Surfaces: Ø30mm hole with Ø32mm x 1mm rebate (requires >3mm material thickness)
 - » Curved Surfaces: Ø30mm hole with Ø32mm x 2.75mm rebate
- **Proud Finish (1mm):** Ø30mm hole

Control

1-10 v | DALI | DMX | ZigBee | Casambi Blue
Light Link | BasicDIM Wireless



Engineer the experience
with MegaPuck Aperture



*Specifications are subject to change without notice.

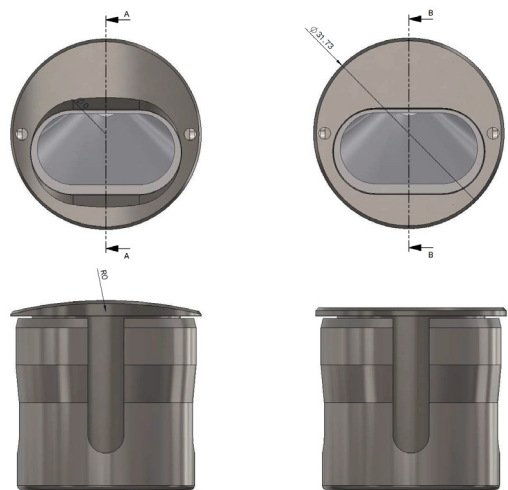


LUMINAIRE DETAIL

Suitable for a range of flat or curved installation surfaces, both metallic and non-metallic.

Applications include integrated lighting into flat surfaces or curved surfaces between 80 to 150mm diameter.

Ideal for bollards, poles and other architectural substrates.

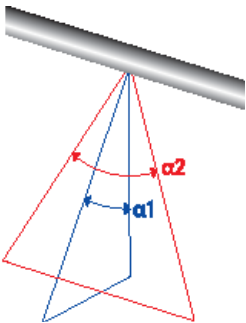
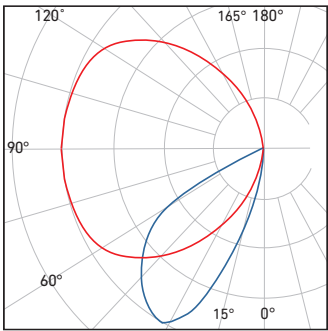


Curved Face

Flat Face

PHOTOMETRICS

MegaPuck Aperture has an extreme asymmetric beam with a UGR of <1%.



LED OPTIONS

Available in 17 colours and a range of white options. Also available in Tunable White and RGBW.







2700K		Tunable White	
3000K		RGBW	
3500K			
4000K			

							Photo Red HR 650-670 nm
Violet VL 400-420 nm	Royal Blue RY 450-460 nm	Blue BL 460-475 nm	Cyan CY 490-510 nm	Green GR 520-535 nm	Amber AM 585-595 nm	Red-Orange RO 610-620 nm	Red RD 620-630 nm
		Phosphor PB Blue	Phosphor PC Cyan	Phosphor PL Lime	Phosphor PA Amber	Phosphor PO Red-Orange	Phosphor PR Red
				Phosphor PM Mint	Phosphor PY Yellow		

*Specifications are subject to change without notice.

ACCESSORIES

The Recessed Spring Mount accessory for mounting into non-rigid materials such as plaster or ceiling tiles.

Available in square or circular, black or white, and other shapes and colours on request.

