

[DATASHEET](#)

PLANET **LED PUCK**

SNAP APERTURE

Aperture is handrail lighting without any unwanted back spill or glare. The ultimate in asymmetric beam control, Aperture's sharp cut off and high performance makes it perfect for positioning discreetly beneath the handrail, while still providing maximum reach and minimum spill. Ideal for maximum control of uniformity.

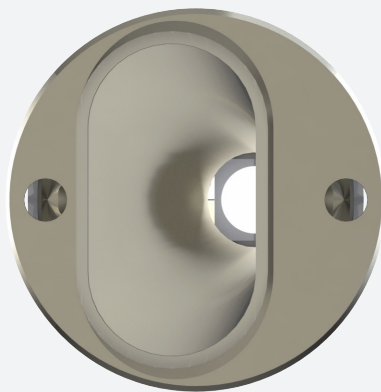


PLANET
LIGHTING



SNAP APERTURE

Aperture is handrail lighting without any unwanted back spill or glare. The ultimate in asymmetric beam control, Aperture's sharp cut off and high performance makes it perfect for positioning discreetly beneath the handrail, while still providing maximum reach and minimum spill. Ideal for maximum control of uniformity.



TYPICAL SPECIFICATIONS

Product Code	Specifications
SNAP-CF-AP-30	SNAP Puck, Curved Face, Aperture Beam, 3000K
SNAP-CF-AP-40	SNAP Puck, Curved Face, Aperture Beam, 4000K
SNAP-FF-AP-30	SNAP Puck, Flat Face, Aperture Beam, 3000K
SNAP-FF-AP-40	SNAP Puck, Flat Face, Aperture Beam, 4000K

SPECIFICATIONS*

TECHNICAL

1.4W / 500mA / 2.8Vf
4000K - 144m
CRI 80+ (CRI 90+ OPTION)
3 STEP MACADAM ELLIPSE
L90 B10 >100,000h

OPTICS

POLYCARBONATE (STANDARD)
BOROSILICATE (OPTION)

DISTRIBUTION

ELLIPTICAL ASYMMETRIC

MATERIAL

316 STAINLESS STEEL
ELECTROPOLISHED

AMBIENT OPERATING CONDITIONS

min. -40° / max. 55°

PROTECTION CLASS

POLYCARBONATE IP65 / IK10
BOROSILICATE IP67 (OPTION)

ELECTRICAL

COOLSPLICE CONNECTOR

INSTALLATION SURFACE

MIN. 1.5mm WALL THICKNESS
MIN. Ø35mm RAIL (CURVED FACE ONLY)
wo

HOLE SIZE

Ø15 mm

COUNTERBORE

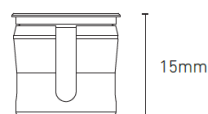
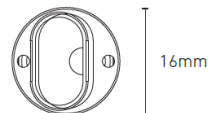
(REQUIRED FOR FLUSH FINISH)
Ø16mm x 1.6mm (Curved Face)
Ø16mm x 0.5mm (Flat Face)

CONTROL

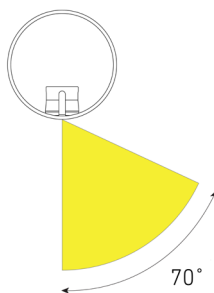
1-10V | DALI | DMX | ZIGBEE | CASAMBI
BLUE LIGHT LINK | basicDIM WIRELESS



Curved Face



Flat Face



Circular distribution measured at vertical down (0°) mounting.

Ask Us.

Your success is important to us. Get in touch with your Planet LED Puck supplier today.

*Specifications are subject to change without notice.

†Test for LED emitter at 500 mA and below 55°C ambient temp.

DATASHEET

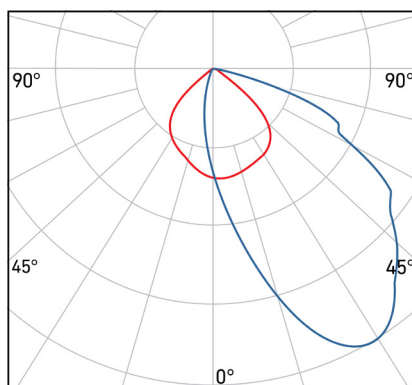
SNAP APERTURE



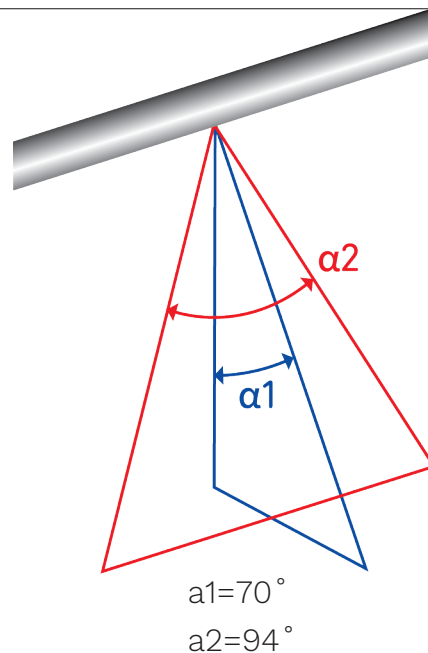
PHOTOMETRICS

Aperture has an elliptical asymmetric distribution. Designed for insertion at 0-10 degrees from the vertical axis of the handrail underside. The asymmetric beam illuminates the path but keeps the light source out of sight.

APERTURE BEAM 4000K



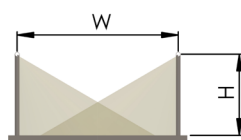
BEAM ALPHA 3000K



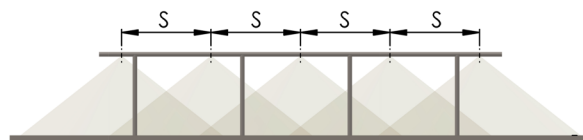
LUX GUIDE

The following guide is intended to help designers and engineers with desired lux levels. The drawing to the right shows a typical installation into a handrail. The tables list the average lux at a variety of path widths and LED spacings.

TYPICAL INSTALLATION



Height (H) is at 1m



lx = average lux

CCT = 4000K

Note: Calculations indicated are with LED module in vertical down position.

ASSYMETRIC BEAM: LIGHT FROM BOTH SIDES

Path Width (W)	1.2m	2.0m	3.0m	4.0m
LED Spacing (S)	lx	lx	lx	lx
0.5m	272	164	108	82
1.0m	136	82	54	41
2.0m	68	41	27	21

