



DATASHEET

Aura H

Overbed light

The colour of comfort

Perfect for hospitals and healthcare, our Australian designed surface mounted lighting provides patients and staff with superior comfort and versatility.



PLANET
LIGHTING



Aura H

Overbed light

Offering a sleek design, excellent glare control and supreme lighting versatility, the Planet Lighting Aura H overbed light gives patients and staff the lighting they need to thrive.

AURA FEATURES

Slimline design

Aluminium body

Antimicrobial coating

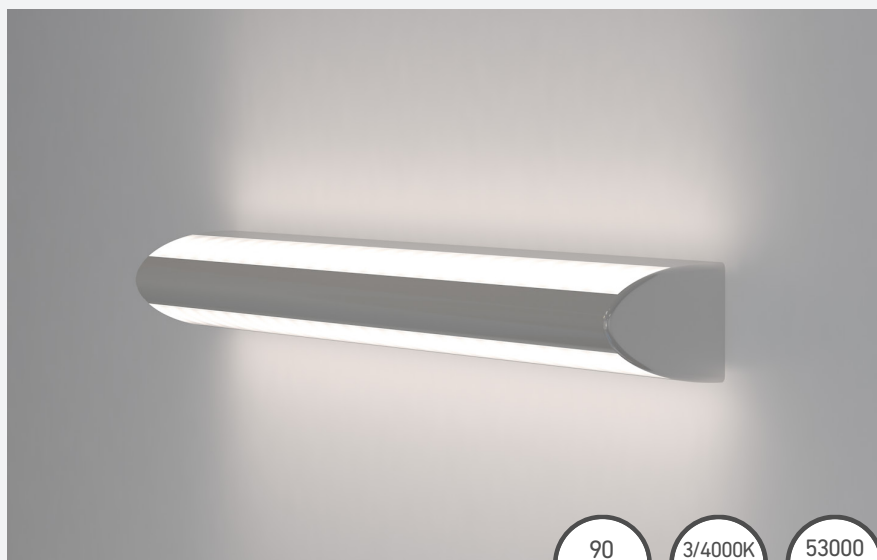
Individual switching of uplight and downlight

High efficacy of 150 lm/W

Easy to clean

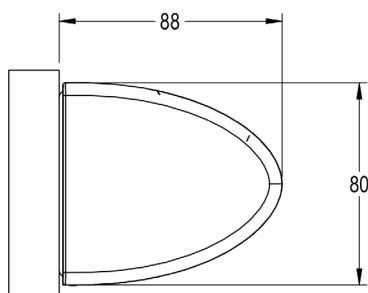
Excellent glare control

1000mm and 500mm length options



GENERAL SPECIFICATIONS

- CRI: 90
- Colour temperature: 3000k and 4000k option
- Efficacy 150 lm/W
- Dimensions (mm):
S (standard) model: 88 x 80 1000
C (compact) model: 88 x 80 x 500



DESIGNED AND MADE IN AUSTRALIA

Manufactured in Australia and built to conform to and exceed rigorous Australian standards and testing.



INDIVIDUAL SWITCHING

Individual switching of uplight and downlight.



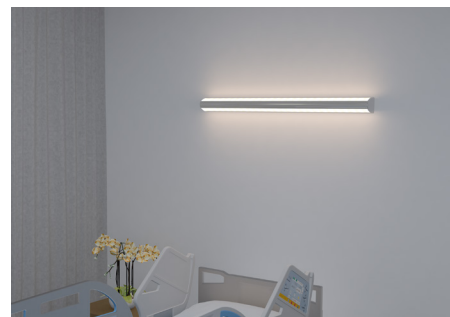
ANTIMICROBIAL

AkzoNobel BioCote® Antimicrobial silver ion technology coating.



SUPERIOR DISTRIBUTION

Our tapered lens design and opal diffuser lens makes even light distribution and suppresses uncomfortable glare.



*Specifications are subject to change without notice.



SPECIFICATIONS*

	Aura H Standard	Aura H Compact
Design		
Product code (3000K) (4000K)	AH-S30 AH-S40	AH-C30 AH-C40
Finish	Antimicrobial white powder coated	Antimicrobial powder coated
Length (mm)	1000	500
Width (mm)	88	88
Height (mm)	80	80
Weight (kg)	3.4	1.7
Technical data		
Min / max ambient temperature	-20 ~ +30°C	-20 ~ +30°C
Electrical data		
Rated supply voltage (V)	90~264VAC	90~264VAC
Mains frequency (Hz)	47~63Hz	47~63Hz
Power consumption (W)	35	17
Power supply efficiency (Typ.)	87%	87%
Lighting data		
Lumen output (lm)	5210	2605
Lumen output up (clear diffuser) (lm)	3620	1810
Lumen output down (opal diffuser) (lm)	1590	795
Efficacy (lm/W)	150	150
Efficacy of emitter (lm/W)	196	196
Control	No dimming	No dimming
	Independent switching of uplight and downlight	Independent switching of uplight and downlight
CRI	90	90
Colour temperature	3000K 4000K	3000K 4000K
Lifetime data		
Lumen maintenance L70 (hrs)	>53000	>53000
Lumen maintenance L90 (hrs)	>44000	>44000

STANDARD SPECIFICATIONS*

PRODUCT CODE	SPECIFICATION
AH-S30	Aura H, standard 1000mm, 3000K, overbed light
AH-S40	Aura H, standard 1000mm, 4000K, overbed light
AH-C30	Aura H, compact 500mm, 3000K, overbed light
AH-C40	Aura H, compact 500mm, 4000K, overbed light

Need Help?

Get in touch today
with your friendly
[Planet Lighting distributor.](#)



*Specifications are subject to change without notice.

