

Description

The OBL is a wall mounted Overbed luminaire designed to integrate the benefits of LED technology. It features excellent glare management and is "clean safe" for infection control. The OBL has a vast array of features and many options including Circadian Rhythm Control, Cyanosis compliance and full RGB control. Australian designed and manufactured.

Features

- Powder coated extruded aluminium body
- Slim line design
- Top and bottom are tapered towards the front for forward (asymmetric) throw of light and easy cleaning
- IP64 -easy to clean for infection control & clean safe
- LED light sources
- All light distribution configurations (see options) can be individually switched
- Opal diffuser lens for even light distribution, frosted optional
- Excellent glare control -complies with AS/NZS 1680.2.5 section 4.1)
- Easy removal of the luminaire for

Maintenance

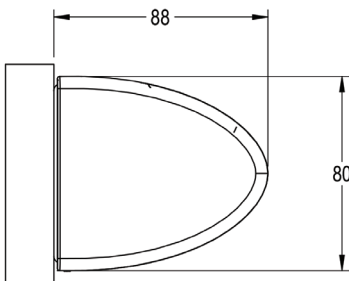
- CRI 90
- Integral gear
- 3 Year warranty

Options

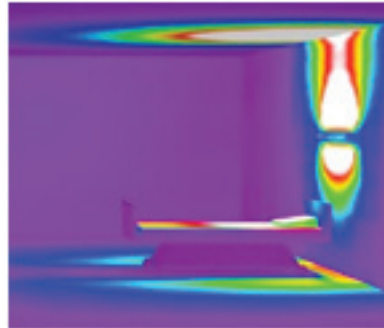
- Two length options:
 - o 1.0 m - up to 60-watt 6,000lm
 - o 0.5 m - up to 30-watt 3,000lm
- Light Distribution (any combination all optional):
 - o Up (indirect)
 - o Reading/down (direct)
- Dimmable: all light distribution configurations can be individually dimmed
- Colour Temperature options:
 - o 3000k
 - o 4000K
 - o 4500K
 - o Cyanosis observation 4000K (complies with AS/NZS 1680.2.5)
- Colour temperature can be individually nominated for Up (indirect), Reading (direct)
- RGB for colour changing
- Circadian rhythm control
- Latching relay

Mounting

- Wall (surface)



OBL: black & white 3D rendering
Direct & Indirect
Length 1.0 Metre
LED: 60-watts
4386lms



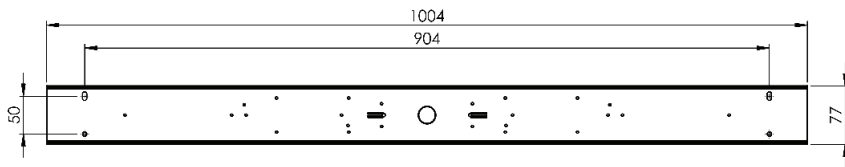
OBL: reverse colour 3D rendering
Direct & Indirect
Length 1.0 Metre
LED: 60-watts
4386lms

CODING GUIDE

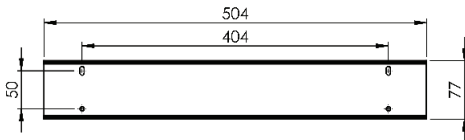
UP						DOWN				
LENGTH	#UP	CONTROL	LAMP COLOUR	DIFFUSER		#DOWN	CONTROL	LAMP COLOUR	DIFFUSER	
O	B	L	2	A	4	C	2	A	I	O
L = Long S = Short	1 = 15W/M 2 = 30W/M	A = DALI E = NO DIM	3 = 3000K 4 = 4000K 5 = 5000K	C = Clear O = Opal		1 = 15W/M 2 = 30W/M	A = DALI E = NO DIM	3 = 3000K 4 = 4000K 5 = 5000K	C = Clear O = Opal	

INSTALLATION GUIDE

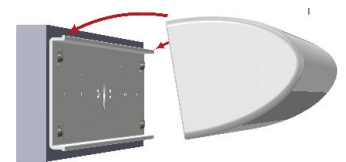
The back plate is supplied with the DC power supply and dimming control installed and wired into the terminal blocks, as per the project brief. On site, electricians are required to mount the back plate in the planned position, ensuring that it is level and suitably fixed using the 4 provided fixing holes.



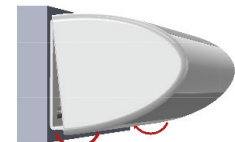
1M BACK PLATE MOUNTING DETAIL



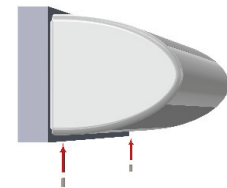
0.5M BACK PLATE MOUNTING DETAIL



1. Align and fit the top of the fitting to the back plate first.



2. Swing the bottom onto the back plate, until you hear the 'click'.



3. Insert the two locking screws.