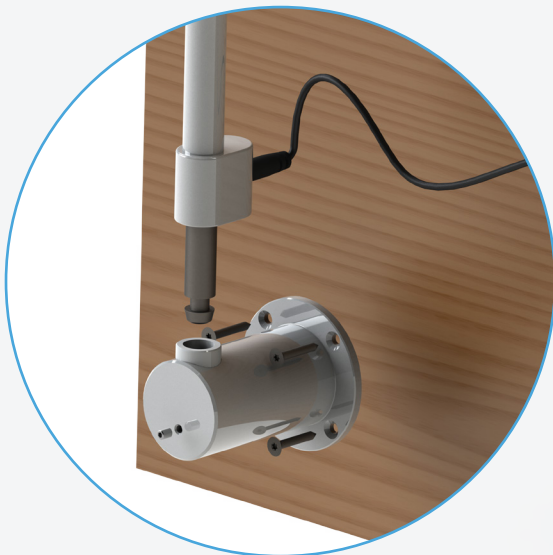




PLANET LIGHTING  
MADE IN AUSTRALIA.  
EXPORTED TO THE  
WORLD.

CUSTOMER SERVICE:  
+ 61 (0)2 6659 5600  
MONDAY - FRIDAY  
9AM - 5PM  
sales@planetlighting.com  
www.planetlighting.com



FLEXLED EXAMINATION LIGHT  
Installation and User Manual

## WARNINGS AND SAFETY NOTICES

### **DANGER – RISK OF ELECTRIC SHOCK**

DO NOT assemble product with the power cable connected to power. Ensure plug is disconnected from mains socket.

### **WARNING – READ MANUAL BEFORE USE**

Read the user manual before use and observe safe operation of product at all times. Contact your supplier or the manufacturer if you have any questions.

### **WARNING – INDOOR USE ONLY**

Product is designed for indoor use only.

### **WARNING – PERMANENT EYE DAMAGE**

DO NOT direct the lighting beam into your eyes or another person's eyes during operation. Looking directly into this light may cause permanent eye damage.

### **WARNING – DO NOT USE ABRASIVE PRODUCTS, PETROL, PAINT THINNERS, ALKALINE DETERGENT, ACIDIC CLEANING AGENTS OR ALDEHYDES.**

Make sure the proportions of the detergents/cleaning agents are accurate based on manufacturers instructions.

### **CAUTION: DO NOT SPRAY CLEANING SOLUTIONS DIRECTLY ONTO THE PRODUCT**

Spraying the product directly may affect product life and performance. Spray onto a cloth and wipe the product.

## 1.0 INTRODUCTION

This installation and instruction manual describes how to install, maintain and operate the Planet 'FlexLED' examination light. Prior to installation carefully read through all the instructions enclosed in this manual.

If there are any concerns or you do not understand, please contact customer service at Planet Lighting.

Under no circumstances should any modifications or adjustments be made.

## 2.0 PRODUCT INFORMATION

The Planet FlexLED is a state of the art examination light which utilises cutting edge Solid State Lighting technology.

Designed and manufactured in Australia by Planet Lighting (established 1911) an R&D driven, exporting designer and manufacturer with leading expertise in the design, manufacture and supply of Solid State Lighting devices worldwide.

The Planet FlexLED provides an improved working environment, significantly reducing ongoing maintenance, with low operational costs and offers a more energy efficient and more sustainable alternative to similar products.

The Planet model FlexLED allows the accurate positioning of the lamp head above any work surface. It is designed to be mounted on a wall, desk or trolley.

At Planet Lighting we take great pride in the design and production of our lights and we are sure you will derive satisfaction from owning and using our products. When installed and maintained in accordance with the instructions contained in this manual, this product will provide many years of trouble free operation.

Should you have an enquiry, comment or special lighting need we would like to hear from you. We back our products with pride, service and an industry leading warranty.

### 2.1.0 Environmental Considerations

#### 2.1.1 Packaging

1 box containing a complete FlexLED lamp with Installation and user's manual.

#### 2.1.2 Transport

Transport to be carried out by road, while maintaining the following environmental conditions:

Temperature: -15/+60 degrees Celsius

Humidity : 10/75%

Atmospheric pressure(h/Pa) 500/1060

#### 2.1.3 Storage

The devices packaged must be stored (warehoused) in a dry place and as per the same environmental conditions mentioned above.

### 2.2.0 Disposal and Recycling Information

The FlexLED light has been designed, taking into account the environmental impact that the manufacturing processes involve. This is to ensure when it reaches its end of life, the disposal method with the lowest/ least negative impact on human health and the environment is selected.

Unlike the sources of traditional light, LEDs do not contain mercury, toxic gases, filaments or fragile parts. Due to the fixture being over 95% recyclable and there being no Bulbs/ Globe changing during the LED life of 50,000+ hours your environmental footprint will be significantly reduced.

When your FlexLED light reaches its end of life, contact Planet lighting or our local agents to learn about recycling options. The FlexLED light must be disposed of properly according to local laws and regulations.

## TROLLEY MOUNT ASSEMBLY

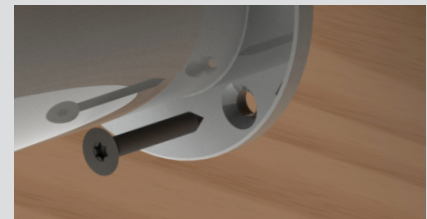
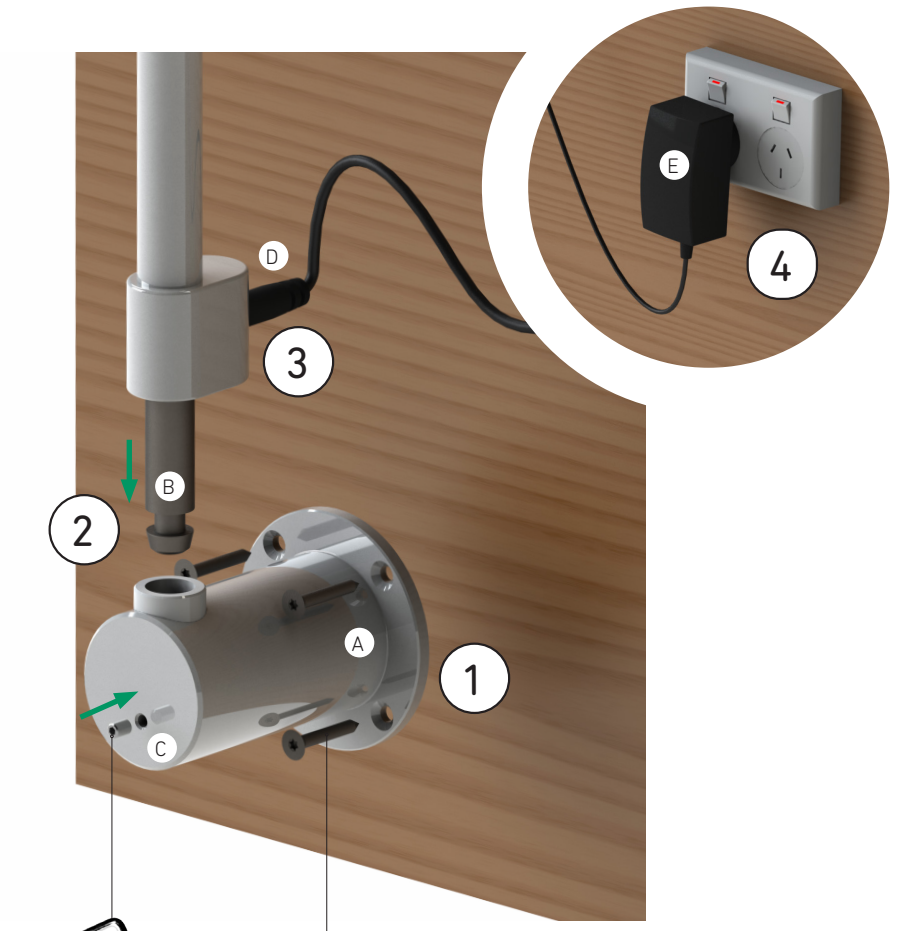
- 1** Slot in the trolley base legs at 90° to each other as shown.
- 2** Place bottom trolley tube (A) onto mobile base hole (B). Secure with the supplied socket head and washer (C), using the Allen key to tighten. *Note, perform this step on a benchtop for easier access to mobile base.*
- 3** Insert spigot of light arm (D) into the bottom tube (A). Secure with the nylon thumb-screw (E).
- 4** Plug in the power adapter to a wall outlet (F).



## WALL / DESK MOUNT ASSEMBLY

- 1** Secure the mounting base (A) to the wall using all four (4) mounting holes – use appropriate fixings supplied by your installer.
- 2** Insert the spigot of the light arm tube (B) into the mounting base. Secure the arm with the supplied grub screw (C), using the Allen key to tighten.
- 3** With the power adapter unplugged, insert power adapter plug (D) into the light arm socket.
- 4** Plug in the power adapter (E) to a wall outlet.

2mm Allen key  
(supplied)

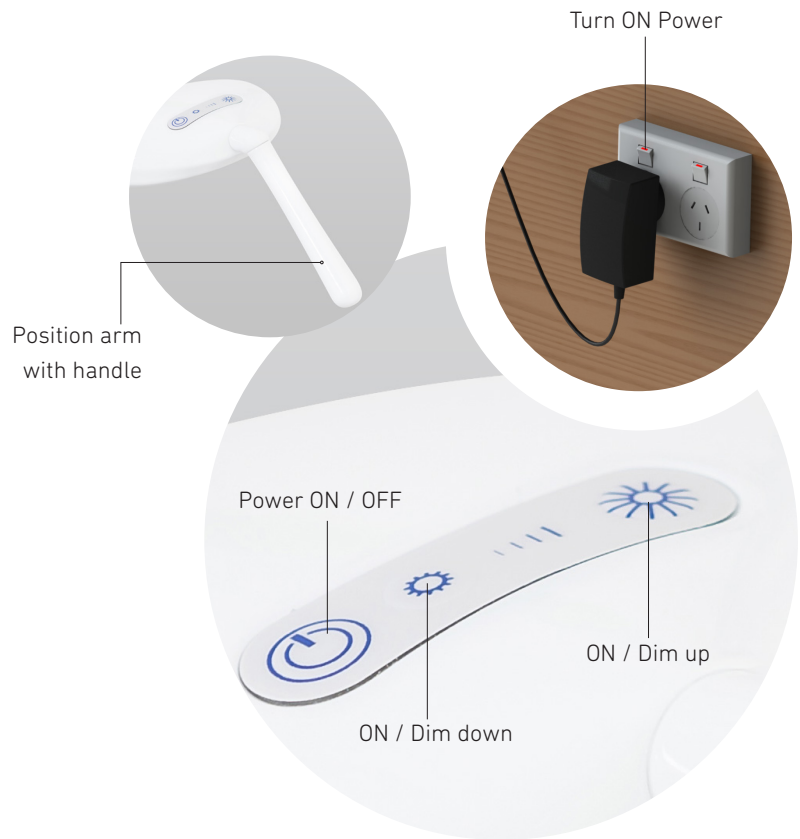


**⚠ Caution!** Fixings suitable for the installation substrate / surface should be determined and supplied by your installer.

## LIGHT OPERATION

### **WARNING – PERMANENT EYE DAMAGE**

DO NOT direct the lighting beam into your eyes or another person's eyes during operation. Looking directly into this light may cause permanent eye damage.



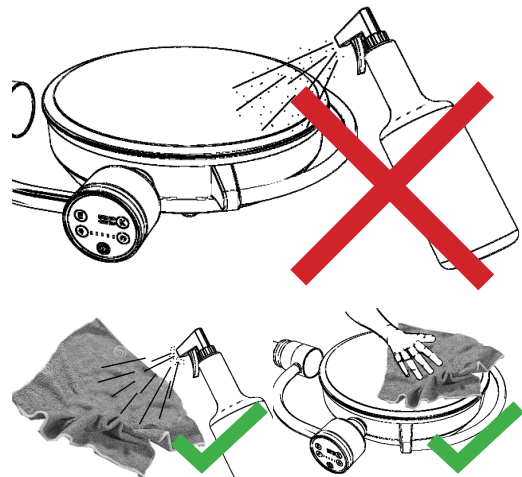
## CLEANING

### **CAUTION: DO NOT SPRAY DIRECTLY ONTO THE PRODUCT**

Spraying cleaning solutions directly onto the product may affect product life and performance. Spray onto a cloth and wipe the product.

### **WARNING – DO NOT USE ABRASIVE PRODUCTS, PETROL, PAINT THINNERS, ALKALINE DETERGENT, ACIDIC CLEANING AGENTS OR ALDEHYDES.**

Make sure the proportions of the detergents/cleaning agents are accurate based on manufacturers instructions.



PLANET LIGHTING  
MADE IN AUSTRALIA.  
EXPORTED TO THE WORLD.

CUSTOMER SERVICE:  
+ 61 (0)2 6659 5600  
MONDAY - FRIDAY  
9AM - 5PM  
sales@planetlighting.com  
www.planetlighting.com

PLANET  
MEDICAL